

KETOS series

The two KETOS models are bursting with strength. These are extremely powerful, modern and commercial professional vacuum cleaners of top class and thus are made for heavy daily use of contractors, industry, maintenance service and food service. The in series connected high performance motors attain a suction power of 300 mbar at a volume flow of 70 litres/sec. per motor. They create a kind of turbo charging effect, which triggers the machine's intense power spectrum at a sound pressure level of only 69 LpA [dB] while operating at full capacity.

With the **KETOS 56/2 E** and **KETOS 81/2 K**, you work sustainably and efficiently at the cutting-edge of technology

and can choose between the Economy and Turbo settings according to the demand. The reliable, patent-pending cyclone water separation system assures optimal water intake. Furthermore, the KETOS models are equipped with a blower function on the back side of the machine, which is activated simply by inserting the vacuum hose, with a robust undercarriage, metal swivel casters and rubber-coated wheels, a large lockable cable hook and an additional blower hose. The filter cartridge is easily removable. Thus, the machine's fine dust collection class can be upgraded to EPA12.



Features



The two devices are equipped with an easily removable filter cartridge on the exhaust side, upgradable to EPA12.



Clever solution: Large, lockable cable hook, thanks to its swivel joint.



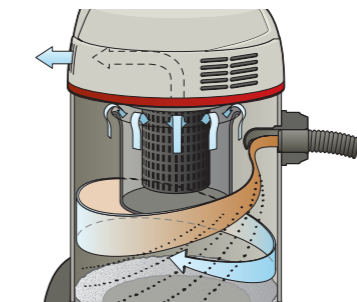
Switch on the face of the machine lets you choose between Economy and Turbo settings. Thanks to the mechanical output regulator, suction power can be adapted to any kind of flooring.

Characteristics

- ▶ Extremely high-performance with 300 mbar suction power
- ▶ Economy and Turbo power settings
- ▶ Mechanical power regulation
- ▶ Low noise generation, only 69 LpA [dB]
- ▶ Robust chassis, stable metal swivel casters, rubber-coated wheels
- ▶ Systematically separated cool and processed air
- ▶ All accessories stored at the backside of device
- ▶ Push bar and vacuum tube made of stainless steel
- ▶ Cyclone water separation system
- ▶ Unique, lockable cable hook
- ▶ Blower function



Patented water separation system.



Due to the twist of the intake nozzle, the spray-fog is consequently diverted along the inner container wall. Additional filters are no longer necessary. The reliable floater system even reacts during heavy foam growth. Cooling air slots located on the side ensure the consistent separation of cooling and processed air.



Cyclone insert for wet vacuuming.



HEPA 13 filter cartridge for dry vacuuming.

KETOS 56/2 E

- ▶ 55 liters container volume
- ▶ Solid stainless steel container
- ▶ Emptying by tipping the body or via the wastewater drain hose



KETOS 81/2 K

- ▶ 80 liters container volume
- ▶ Wear-resistant plastic container
- ▶ Emptying via the wastewater drain hose
- ▶ Complete drainage of wastewater

Additional equipment for KETOS 56/2 E



The KETOS can either be tilted or conveniently emptied via the wastewater drain hose.



Optional for the Ketos 56/2 E
The 650 mm gangway nozzle can be conveniently operated by foot pedal from the rear of the vacuum cleaner. Item no. 102010

Shown with optional metal floor nozzle. Item-no. 102051



Additional equipment for KETOS 81/2 K

Wastewater drain hose for a convenient and complete emptying of the container



	Item-no.	UK	EU
KETOS 56/2 E	112008	112001	
KETOS 81/2 K	112009	112002	
2 x 0,5 m suction tubes stainless steel ø 38 mm, 3 m suction hose, crevice nozzle and furniture nozzle, wet floor nozzle 450 mm, dry floor nozzle 450 mm, HEPA13 fine dust filter cartridge, fleece filter bag, cyclone unit, 10 m power cord, black			

Accessories



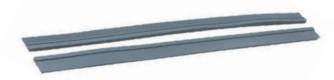
Extremely robust metal floor nozzle, 450 mm. Item-no. 102051



Antistatic suction hose, 3 m. Item-no. 102116



Fleece filter bag. Item-no. 102031



Rubber lips, 450 mm. Item-no. 101026

TECHNICAL DATA	Ketos 56/2 E	Ketos 81/2 K
Voltage	220-240 V / 50 Hz	
Max. power	2600 W	
Number of turbines	2	
Sound pressure level	74 LpA [dB]	
Volume flow rate	2 x 70 litres / sec.	
Max. suction	300 mbar	
Container material	stainless steel	plastic
Container volume	55 litres (gross)	80 litres (gross)
Length of power cord	10 m	
Length of hose	3 m	
Diameter of hose	38 mm	
Diameter of tubes	38 mm	
Weight	21 kg	20,6 kg
Dimensions (L x W x H)	47 x 54 x 90 cm	62 x 45 x 98 cm

STANDARD KIT	Item-no.	Ketos 56	Ketos 81
Vacuum tubes, stainless steel (1 piece)	102018	●	
3 m suction hose complete	102013	●	
Wet floor nozzle 450 mm	102124	●	
Dry floor nozzle 450 mm	102125	●	
Crevice nozzle	102016	●	
Furniture nozzle	102017	●	
HEPA13 filter cartridge	109058	●	
Fleece filter bags (5 pieces)	102031	●	
Cyclone unit	109057	●	
10 m power cord, black	112135	●	
10 m power cord, black (UK)	112149	●	

Accessories overview, see page 76-77 and 106-107.