

HYDROX series

SPRINTUS

MADE IN
GERMANY

NEW FOR 2026



HydroX Works

Powerful for
industry and general repairs

HydroX Fire

Professional equipment for fire
brigades and technical relief services

The new pump vacuums. Compact. Powerful. Reliable.

The **HydroX** series redefines performance in the field of pump vacuums and is ideal for removing large volumes of water in the event of flooding, water damage or fire damage. Whether **HydroX Works** for industrial use or **HydroX Fire** for emergency services – both models combine maximum suction power with a powerful pump and compact design. The HydroX series with a 40-litre tank capacity is manufactured in Germany, ensuring the highest quality and reliability. Both suction pumps offer an optimally balanced ratio of suction and pumping power, ensuring efficient and continuous operation. The dry-running pump features a quick-change system and can be easily removed, cleaned or replaced.

The new, large collection basket and the proven cyclone system ensure effective separation of coarse particles and foam. A 10 m dirty water hose with a diameter of 38 mm and the universal C-pipe connection for fire brigade and technical relief services hoses optimally convert the high pump performance into actual delivery performance. A PRCD personal protection switch and safe sockets (IP54 for HydroX Works 113010 & IP68 for HydroX Fire 113050) provide enhanced safety. Robust locking brakes, practical cable hooks, a flexible push bar and convenient accessory storage also ensure maximum ease of use.

HYDROX WORKS

- ▶ IP54 socket*
- ▶ plastic fittings
- ▶ Max. delivery head of 9 metres
- ▶ Max. flow rate (pump) of 17,000 L/H

HYDROX FIRE

- ▶ IP68 socket*
- ▶ Aluminium C-coupling
- ▶ Aluminium floor nozzle
- ▶ Stainless steel suction tubes
- ▶ Increased pump power of 750 W
- ▶ Max. delivery head of 10 m
- ▶ Max. flow rate (pump) of 19,000 L/H

VS

* only 113010 or 113050

Advantages:



Well balanced suction and pump performance: The HydroX Works achieves a pump power of 550 W with a maximum pump flow rate of 17,000 l/h and a delivery head of up to 9 m. The HydroX Fire scores with 750 W, a pump delivery rate of up to 19,000 l/h and a maximum delivery head of 10 m. This ensures continuous and efficient operation, even under demanding conditions.



Efficiently-designed filter basket: Featuring small perforations in the lower section and wide openings at the top, it allows continuous drainage while effectively separating sludge and large particles. Its large capacity enables extended operation, and the basket can be easily removed for emptying and stands securely on the floor.

Features:



Efficient quick-change system:
Pump can be easily and quickly removed, cleaned and replaced



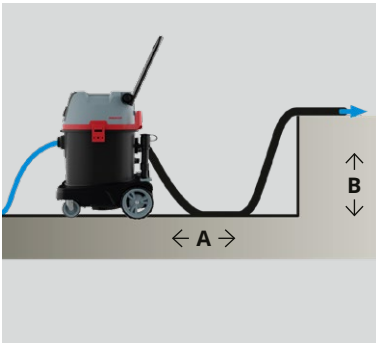
Optional adapter plate: for tool-free attachment of tool cases from all common manufacturers



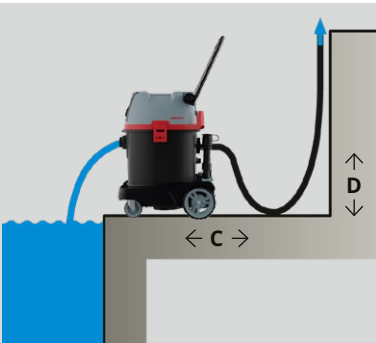
Practical carrying handle: retractable for mounting the optional adapter plate for tool cases



Flexible push bar: adjustable and foldable for easy transport



Maximum pumping distance:
HydroX Works: A 60 m, B 4 m
Hydrox Fire: A 60 m, B 5 m



Maximum delivery head:
HydroX Works: C 10 m, D 9 m
Hydrox Fire: C 10 m, D 10 m



Easy-to-maintain exhaust air filter: simple to clean

Convenient cable hooks: for easy and secure transport

Universal C-coupling connection: for wastewater hose, compatible with fire brigade and technical relief services hoses (standard accessory 10 m)

Efficient drainage system: complete emptying of the container thanks to the bendable drainage hose

Sturdy locking brakes: prevent the vacuum cleaner from rolling away unintentionally

Robust on/off switch: rotary switch for reliable operation

Safe power supply: PRCD personal protection circuit breakers and safe sockets (IP54 or IP68) only 113010 or 113050



Customised logo sign: strengthens your brand and corporate image

Space for accessories: 3 slots and dovetail guide on the rear of the device

Operating principle:

Water is sucked in through the suction hose. The integrated wastewater pump immediately pumps the collected water through the C-pipe connection at the rear of the device.



Fields of application:



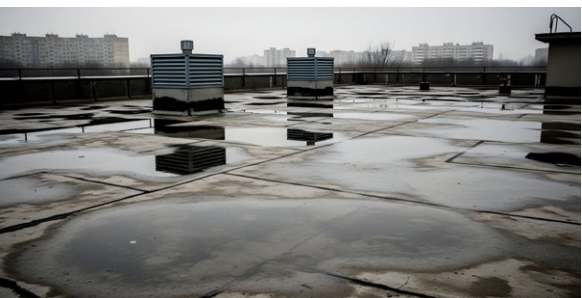
firefighting operations



flood operations



water damage



flat roof renovation

Technical Data:	HYDROX WORKS	HYDROX FIRE
Voltage	220V-240V / 50-60Hz	
Total power	1750 W	1950 W
Power consumption (device)	1200 W	
Power consumption (pump)	550W	750W
Sound pressure level	79 dB(A)	
Max. Suction	230 mbar*	
Volume flow rate	74 l/sec	
Max. flow rate (pump)	17.000 l/h	19.000 l/h
Max. suction height	2 m	
Max. delivery head (pump)	9 m	10 m
Container material	Plastic	
Container volume	40 Litres	
Wastewater connection	C-coupling	
Length of suction hose	7 m	
Length of discharge hose	10 m	
Diameter of hose	38 mm	
Diameter of tubes	38 mm	
Length of power cord	10 m	
Weight	22 kg	23 kg
Dimensions (L x B x H)	718 x 539 x 388 mm	

*Measured at the nozzle

		HYDROX WORKS	HYDROX FIRE
	Item-No. EU Item-No. UK	113010 113012	113050 113052
Standard accessories:			
C-hose pump side 10 m	113258	■	■
Suction hose 7 m	113257	■	■
Cyclone insert	113222	■	■
Suction tube plastic	113245	4 pcs	□
Suction tube 0,5 m, stainless steel	102018	□	2 pcs
Removable filter basket	113215	■	■
Crevice nozzle 240 mm	102016	■	■
Wet floor nozzle 360 mm	109114	■	□
Wet floor nozzle Metal 450 mm	113250	□	■
Pump 550 W	113235	■	□
Pump 750 W	113234	□	■

■ standard accessories

□ Optional accessories