

# EM17EVO



New design. New smooth-running capability. Fully equipped.

### Suggested Use

The EM 17 EVO is perfect for hard daily use with its robust planetary gear.

The 10-litre water tank ensures that work is performed quickly and comfortably. Due to the tool-free disc exchange, the EM 17 EVO can be adapted to all surfaces without long waiting times.

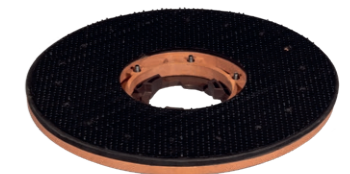
In combination with the Queen Bonnet Pad, unparalleled cleaning results can be achieved on carpeted floors. For optimal results in case of intense and tough dirt, the device weight can be increased with the optional 14 kg additional weight.

Due to the large rubberised wheels, the machine does not leave any marks, even on vulnerable surfaces.



### Features

- Robust planetary gearbox
- Integrated 10-litre freshwater tank
- Tool-free change of brush and disc
- Changing of disks and brushes without the use of tools



Pad holder.  
Item-no. 205122



Brush medium.  
Item-no. 205121



Brush soft.  
Item-no. 205120

### Accessories:



Power Pad.  
Item-no. 201076



Duo Pad.  
Item-no. 201077

### Accessories:



The Queen Bonnet pad for the best cleaning results on carpets and carpeted floors.  
Item-no. 201009



All operating elements are situated on the ergonomic handle.

Large 10-litre freshwater tank.



Additional 14 kg weight.  
Item-no. 201068

### TECHNICAL DATA

Voltage	220-240 V / 50 Hz
Max. power	1200 W
Sound pressure level	57 LpA [dB]
Brush rotation	154 u/min.
Max. disk diameter	17" / 432 mm
Diameter pad holder	16-17"
Freshwater container	10 litres
Weight	41 kg
Length of power cord	12 m

Item-no. UK EU

**EM 17 EVO** 203004 203001

fresh water tank, brush medium, brush soft, pad holder, 12 m power cord, signal red

### STANDARD KIT:

Brush medium 17"	205120
Brush soft 17"	205121
Pad holder (16-17")	205122
12 m power cord	201080
Fresh water tank	203100

### ACCESSORIES:

Pad white 17" (5 pieces/unit)	201005
Pad red 17" (5 pieces/unit)	201006
Pad green 17" (5 pieces/unit)	201008
Pad black 17" (5 pieces/unit)	201007
Queen Bonnet-Pad 17"	201009
Power Pad 17"	201076
Duo Pad 17"	201077
Additional weight (14 kg)	201068